

TECHNICAL SPECIFICATION SHEET

100 WATT, HPS S54, HX-HPF BALLAST E-SZAXXX100, 60Hz

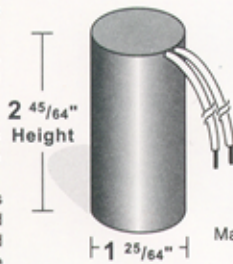
CAPACITOR

RATING 10 MFD±3%
280 VAC, MIN

Dry Film Capacitors
Thermal Plastic Case

Dry film capacitor contains no oil; are furnished with 12" leads and includes discharge resistor.

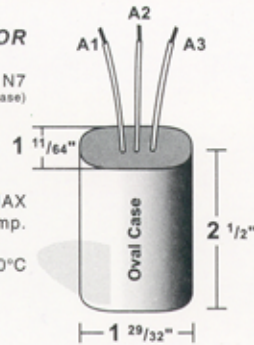
Max. case temp. 110°C



IGNITOR

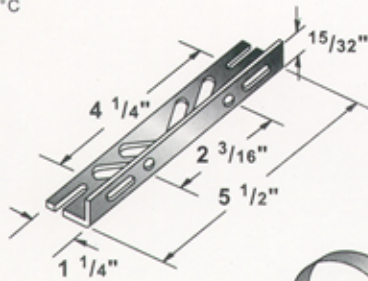
37-63-AS-9.1 N7
(Thermal Plastic Case)

2 F.T. MAX
Distance to lamp.
Max. case temp. 110°C



BRACKET

CORE & COIL
MOUNTING BRACKET



KB39
Mounting bracket for
Core & Coil Ballasts
(1 bracket with thru bolts)

C-01

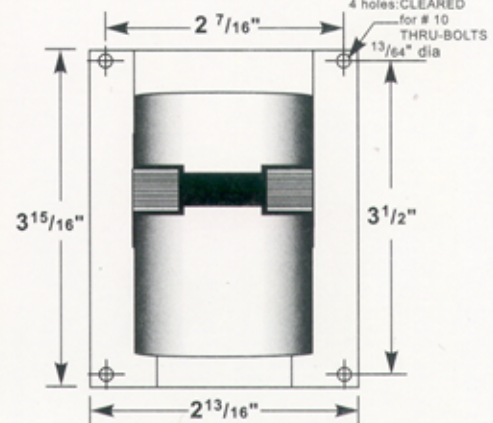
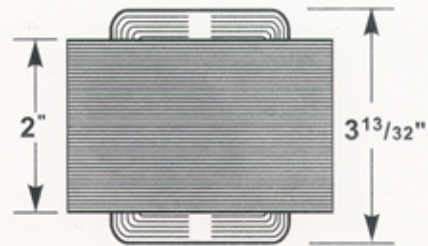
MOUNTING CLIP for round case (Furnished as standard with B suffix ballasts)

I-01

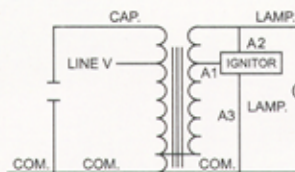
MOUNTING CLIP for oval case (Furnished as standard with B suffix ballasts)

CORE AND COIL

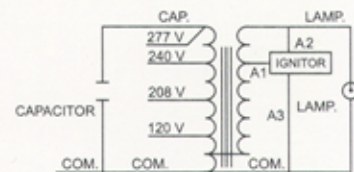
(3" x 4" CORE)



SOLA ballast leads wires are properly identified indicating on their surfaces the input voltages. ALL LEAD LENGTHS: 12 INCHES



SINGLE VOLTAGE



MULTI VOLTAGE
120/208/240/277
VOLT CONNECTION

ELECTRICAL CHARACTERISTICS

INPUT VOLTAGE RANGE	±5%
POWER FACTOR	HIGH
LAMP POWER REG.	WITHIN TRAPEZOID
MIN. STARTING TEMP.	-40°C



RU File No. E182278

Line Voltage	Catalog Number	Circuit Type	Input Watts	Line Current (AMPS)			Open Circuit Voltage	Drop Out Voltage	Fuse	Ballast Net Weight (lbs)	UL Bench Top Rise Code 1029
				Operating	Open Circuit	Starting					
120/277	E-SZA0FT100	HX-HPF	128	1.14/0.49	2.0/0.87	1.09/0.46	120	96/222	8/3	6.5	A
208	E-SZA00R100	HX-HPF	128	0.66	1.16	0.62	120	166	5	6.5	A
240	E-SZA00M100	HX-HPF	128	0.57	1.0	0.55	120	192	5	6.5	A
277	E-SZA00T100	HX-HPF	128	0.49	0.87	0.46	120	222	3	6.5	A
120 or	E-SZA00W100	HX-HPF	128	1.14	2.0	1.09	120	96	8	6.5	A
208 or		HX-HPF	128	0.66	1.16	0.62	120	166	5	6.5	
240 or		HX-HPF	128	0.57	1.0	0.55	120	192	3	6.5	
277		HX-HPF	128	0.49	0.87	0.46	120	222	3	6.5	

ORDERING INFORMATION

***Add proper suffix to catalog number when ordering as indicated below:

No suffix= Core and Coil and Ignitor Only

B= Core and Coil, Ignitor and Bracket

C= Core and Coil, Ignitor and Capacitor

BC= Core and Coil, Ignitor, Capacitor and Bracket

Lighting & Power Source
2707 Realty Road, Suite 110
Carrollton, TX 75006
(888) 385-4448 Fax: (972) 418-5858
www.ballastsource.com
ISB@solaballast.com

ISB SOLA BASIC
BALLASTS